



**PORT AHURIRI  
SCHOOL**

admin@portahuriri.school.nz

www.portahuriri.school.nz

T. 06 8357988 F. 06 8359197 A. 15 Lever St, Ahuriri, Napier 4110

## No 19: 20 September 2021

Dear Parents & Caregivers

**Tēnā koutou te hunga pānui o tō tātou hāpori.**

**Ngā mihi mahana ki a koutou katoa**

Welcome to week nine of this term. At the moment I don't know if you are anything like me, but I seem to be losing track of everything with changes to timeframes and what have you. So, in case you have forgotten, or it's come up far quicker than you thought possible, next week (01 October) is the last day of this term.

The big event this week is school cross country. Under Level 2 we cannot have gatherings (outside of the children's bubble) of over 100 people in an outdoor space and cross country is an event we know you love to come and support.

So, to cater for spectators and numbers, we are again going to have the finish here at school. The children will run from South Pond, along Domett Street, to the finish line on the school field. Children will then be sent back to class so that the next year group can start their race.

We would love for you to come and support your child by spreading around the course along South Pond, Domett St and outside the fence on the school field. This will give everyone who wants to watch enough space to make sure they can adhere to the Covid guidelines and socially distance two metres apart. We ask that you please don't come onto the school site as this makes it very difficult to count people, contact trace and socially distance, but we also have to count you and make sure we don't have bubbles over 100 and then socially distance you as well. Which, to be fair, is a bit of an ask.

Races will be at set times spread about 20 minutes apart for each year group so that you can come and go for the races you want to see and so we don't have congestion around the course. Your child's teacher will walk them to the start line at South Pond (groups will start in various places) where they will begin their race immediately. The children will run from South Pond, along Domett Street, to the finish line on the school field. Children will then be sent back to class so that the next year group can start their race.

We will stick to the following timetable so that you can arrive at the exact time of your child's race and then leave as soon as the race has finished to make space for the next group of whanau spectators.

**10:30 - Race 1 Year 1 Girls & Boys**

**10:50 - Race 2 Year 2 Girls & Boys**

**11:10 - Race 3 Year 3 Girls & Boys**

**11:30 - Race 4 Year 4 Girls & Boys**

**11:50 - Race 5 Year 5 Girls & Boys**

**12:10 - Race 6 Year 6 Girls & Boys**

If by any chance we change alert levels we will keep the course, date and times the same, but Level one would apply. We thank you for your understanding, patience and support and look forward to seeing you hanging over the fence.

### Important Dates / School Events

22 Sept	Camp Sausage Sizzle
23 Sept	School Cross Country
29 Sept	Camp Sausage Sizzle
01 Oct	End of Term Three
16-17 Nov	School Production Nights
22-26 Nov	School Camp Week
14 December	Last school day of the year

### Koina ngā kōrero mo tēnei wā

**Kia pai ō koutou wiki**

**Nāku nā**

*Glenn*

### New Enrolments

A warm welcome to: Archer Preece who has started school with us.

We hope you enjoy your school days at Port Ahuriri.



### School Bank Account Details:

For your convenience, please use online banking for any payments to the school. Use your child's name and what it is for as the reference (not lucky book club though please as this is run separate to the school).

### Sports Uniforms

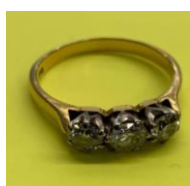
Please return all school sports tops not being used for Term 4 sports to hub teachers.



### Netball for Years 1-4

Year 1-4 Netball will start on 28 October. Notices have been sent out and payment can be made online.

Please return forms asap so we can register teams.



### Message from Eastern District Police

Do you recognise this ring?

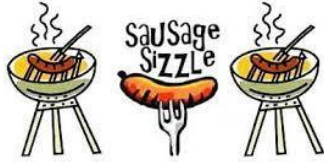
It was found on the 14th September in Ahuriri, Napier.

If it is yours or have information that may assist Police, please call 105 quoting the file number 210914/4890.

You will need to prove ownership.



## Camp Tutira Fundraiser



Wednesday 22<sup>nd</sup> & 29<sup>th</sup> September  
\$2 per sausage

Please order now for both weeks

Please pay to the children collecting money outside the office

### CASH ONLY

Please get your orders in for  
**BOTH WEEKS before 3pm tomorrow.**

**Sorry but we will not be able to accept any orders after 3pm  
TUESDAY 21st SEPTEMBER.**

Thank you for supporting our tamariki with their fundraising for  
Camp Tutira



Scholastic New Zealand's Auckland warehouse is currently closed due to the COVID-19 lockdown.

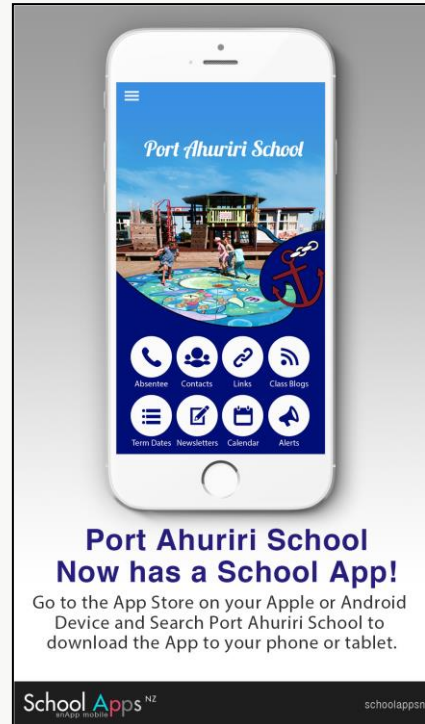
We have received a number of queries from schools and parents enquiring as to the status of their orders. Due to the lockdown, we have a number of unfulfilled orders stuck in our warehouse. As books are deemed non-essential items, we are not able to operate and ship any of these orders to school or homes. I'm sure that you will understand that this situation is beyond our control, as it is for many New Zealand organisations and we thank you for your patience and understanding.

Rest assured, we will be prioritising these orders as soon as Auckland reaches level 3 and our fantastic team gets back to our warehouse. Auckland orders will be dispatched to schools as soon as Auckland reaches level 2 and students return to in-person learning.

In the meantime, if you have any questions related to your order please email [bookclub@scholastic.co.nz](mailto:bookclub@scholastic.co.nz). Our Customer Services Team are working from home and will reply to your email with an update as soon as they are able to.

Please stay safe during the lockdown.

The Scholastic Team



A friendly reminder to keep your school app updated with your child's correct hub so that you don't miss out on any Hub notices sent out.

Download it from your App Store by searching School Apps, then Port Ahuriri. It is free to download.

If you are not aware of the menu options, click on the three lines on the top left and select "Alert Subscriptions". You will be able to click on your child's Hub and select any sports you would like to get alerts about.

If you have any problems please contact Sonya.

